

## 1917 Trailer Activities **B1** **B2**

1. How many soldiers? \_\_\_\_\_



2. Colours? **A. Before watching the trailer**

---

---

---

---

---

---

---

---

---

---

3. "Time is the enemy": can you guess why this tagline is on the film poster?

---

---

---

---

---

---

---

---

---

---

---

---

---

---

---

---

---

---

---

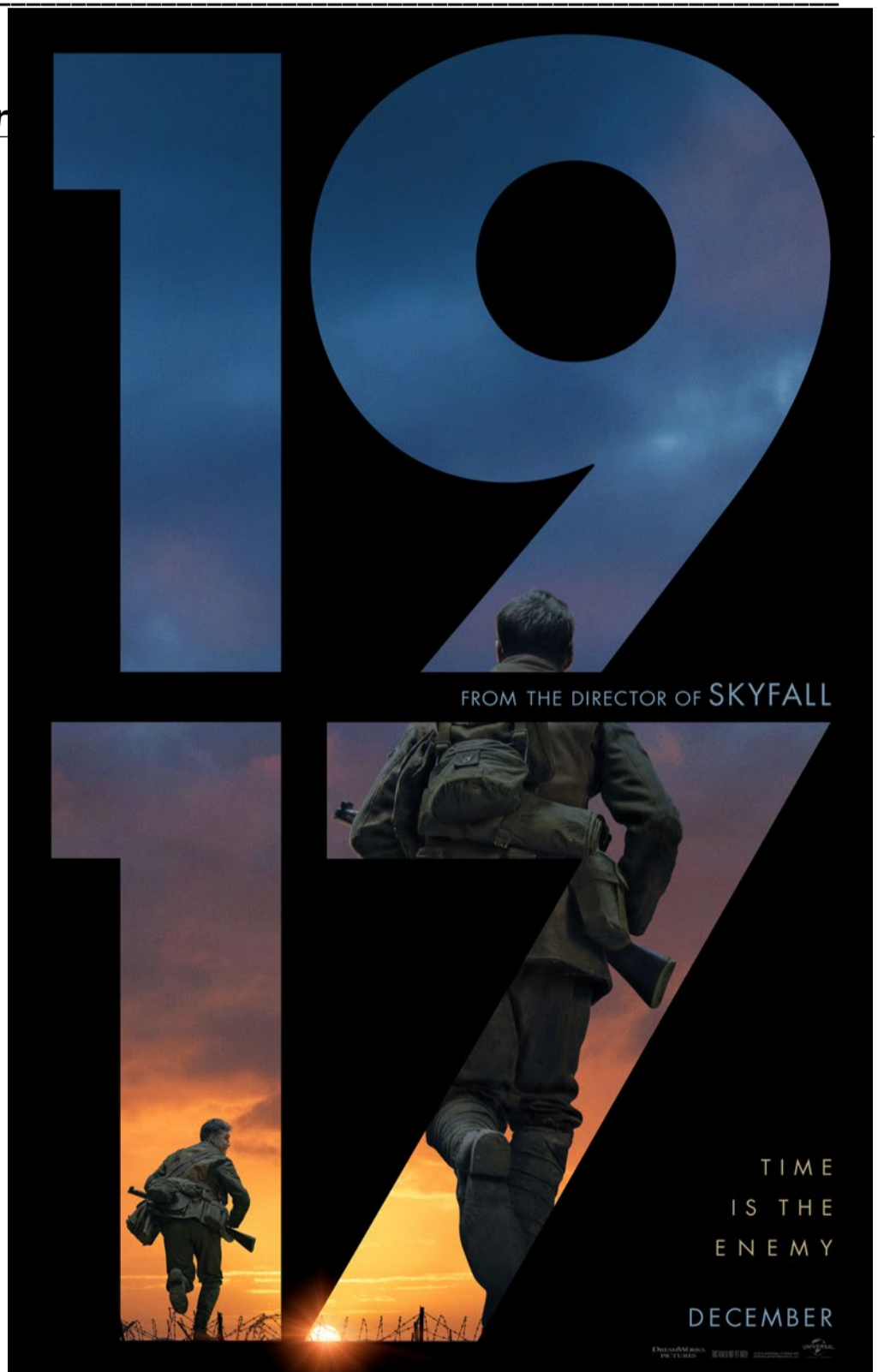
---

---

---

---

---



**B. Now watch the trailer. Can you complete your answers to the previous questions?**

**C. Develop your knowledge and understanding of the First World War through the trailer of the new epic thriller film, 1917.**

1. Find as many words as you can to describe the soldiers' feelings and behaviours.

---

---

---

2. How does the trailer reflect the harsh realities of the Western Front? Sights, sounds and smells? (Life in the trenches.)

---

---

---

---

---

3. The soundscape (ambiance sonore): what feelings are provoked by the soundscape?

---

---

4. a. How is the concept of time represented?

---

---

b. What about duty?

---

---

---

5. *Bravery, brotherhood and friendship*: do these words apply to the characters? Explain.

---

---

---



## D.1. Analyse this still from the trailer:



Imagine you are Schofield (the soldier in the middle): What can you see? What can you hear? What can you smell? What are you thinking? \_\_\_\_\_

---

---

---

---

2. Write a story based on the image with the title: "Time is the enemy".

---

---

---

---

---

---

---

---

---

---